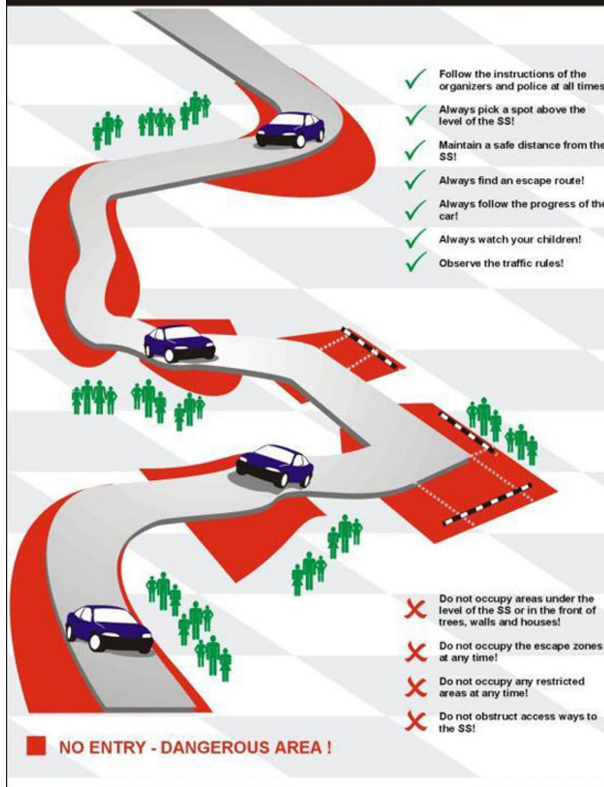




!! Spectator Safety !!

PLEASE PAY ATTENTION TO SAFETY !
Please keep in mind that you attend the rally at your own risk !



Please respect the Farmers properties by parking considerably, not littering, avoid smoking due to fire risk and spectating from a safe vantage point.



With Thanks

The Sports Car Club East Rand & National Rally Championship and Motorsport South Africa would like to give a great deal of thanks to the Bronkhorstspuit community, the Land Owners—Hans Van Rensburg, Gustav Potgieter and Willem Prinsloo Museum, - officials, marshals, sponsors, Especially TRACN4, and competitors for making this event possible.



Please Note Travelling to Stages on the N4 highway, will result in Toll Fee's payable.

Spectator Point 1

SS1 DAY 1 - Starts at 14h08

SS9 & 11 DAY 2 - Starts at 13h12 & 14:53

Spectator Point

After parking your vehicle in the designated spectator parking at the museum, you can walk to the finish of the stage, very close to the main entrance of the museum. From here you will be able to see the rally cars racing very close to you. Please follow marshal instructions. They are here for yours and your children's safety.

S25° 46.726' E28° 33.223'

From Willem Prinsloo Museum to Point A Godrich Toyota Bronkhorstspuit

S25° 49.731' E28° 44.653'

Exit Willem Prinsloo Museum. Zero Odo at R104

- 0.0 Turn Left onto R104 to Bronkhorstspuit.
- 5.98 Turn Right—N4—Valtaki. R22-00 Toll
- 6.26 Turn Left onto N4 to Bronkhorstspuit
- 19.20 Exit Left to Bronkhorstspuit
- 19.74 Stop. Turn Right to Kemptonpark
- 20.98 Godrich Toyota on Right.

From Point A Godrich Toyota

S25° 49.731' E28° 44.653'

to

Spectator Point 2

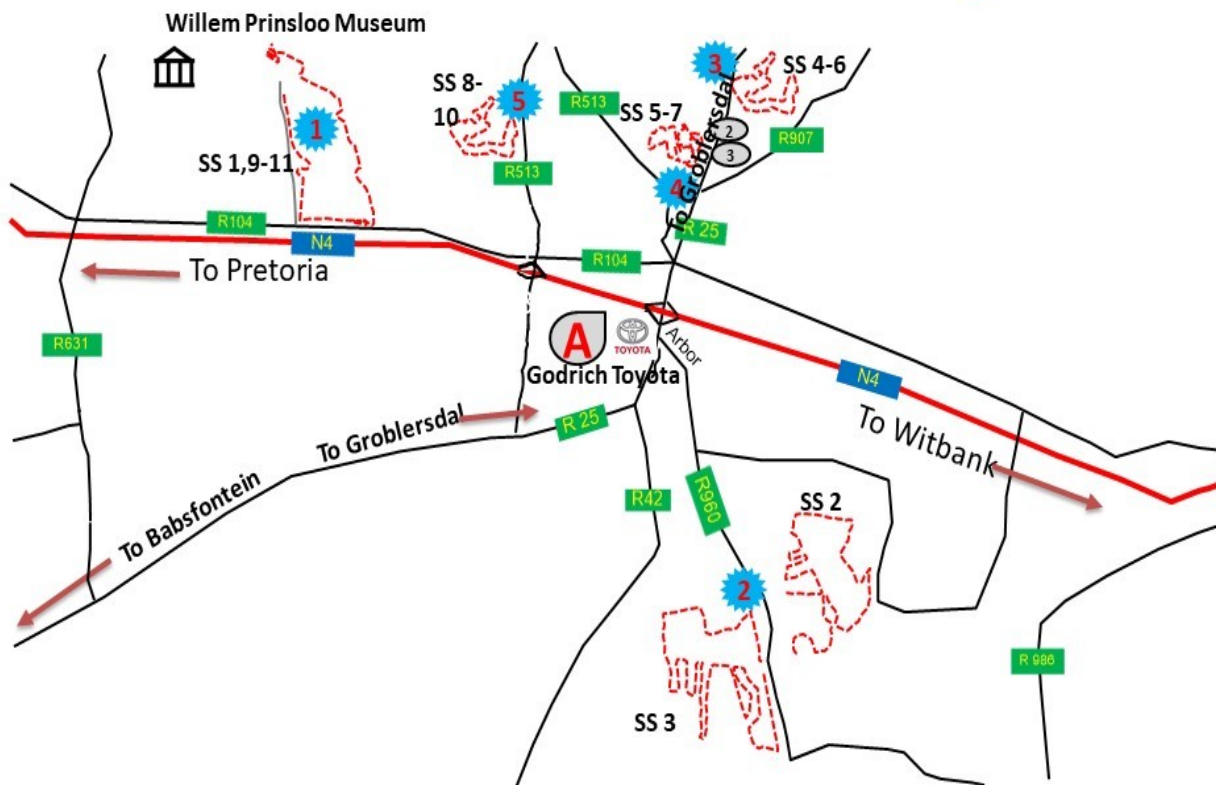
SS2 Day 1- Starts at 15h29

SS 3 Day 1—15h52

- 0.0 From Godrich Toyota, Cross Straight Over the R25 onto the Arbor Road
- 2.43 Onto Gravel
- 8.41 Start and end of Stage 2 on Left, Straight on
- 9.33 Spectate on the right Hand Side for 1 km

S25° 54.650' E28° 47.002'

2019 TRACN4 NATIONAL RALLY



FOOD AND DRINKS ARE AVAILABLE AT WILLEM PRINSLOO AGRICULTURAL MUSEUM

From Point A Godrich Toyota to

Spectator Point 3

SS4 - Starts at 08h15

SS6 - Starts at 10h28

- 0.0 From Godrich Toyota, Turn Left Onto R25 towards Groblersdal
- 1.73 Traffic Light—Straight on
- 2.84 4-way Stop—Straight on
- 9.43 Entrance to Spectator Point 4 on Left (Fred Everett Bigbore Shooting Range) Straight on
- 12.57 Spectating all along the Fence on Right for approx 800m

S25° 43.795' E28° 47.953'

From Spectator Point 3 to

Spectator Point 4

SS5 - Starts at 08h38

SS7 - Starts at 10h51

- 0.0 Return back towards Bronkhorstspuit
- 3.13 Turn Right onto Gravel Road at Fred Everett Bigbore Shooting Range Sign Start and End of Stage. Spectating all Along outside Fence.
- 3.68 S25° 44.911' E28° 46.071'

From Spectator Point 4 to

Spectator Point 5

SS 8—Start at 12h39

SS 10—Starts at 14h20

- 8.62 Exit back to Tar Road . Turn Right towards Bronkhorstspuit. Turn Right onto N4 Highway— Direction Pretoria Take Ekandustria Off Ramp R22-00 Toll Fee
- 13.43 Turn Right to Ekandustria.
- 14.17 4 way Stop Straight on
- 14.81 Turn Left at Schietpoort and continue Straight through gate.
- 17.28

S25° 46.749' E28° 41.375'

From Spectator Point 5 to

Spectator Point 1

SS9 -Starts at 13h12

SS11—Starts at 14h53

- Exit Schietpoort and Turn Right Onto tar towards N4 Highway
- 2.46 4 way Stop. Turn Right towards Pretoria. R104
- 16.65 Turn Right into Willem Prinsloo Museum. Park in the Public Parking and walk to the Rally action !!