

TECHNICAL BULLETIN

Installation Instructions for Rally S.A. Vehicles (NX12 unit)

1. Scope

The purpose of this document is to provide instructions for the installation of the Ctrack NX12 tracking device into the Rally S.A. vehicles.

2. Installation Kit

The following equipment will be supplied in the installation kit:



Plug & Play harness



Panic Button Assembly & Ctrack Unit

CAUTION: The panic button is allowed to be used for **MEDICAL EMERGENCIES ONLY**



Ctrack Bracket

3. Installing the Ctrack Unit's Bracket

Identify a flat surface on the centre hump between the front seats to mount the bracket. Mark out the positions of the two mounting holes on the bracket and drill two 5mm holes through the vehicle's body.

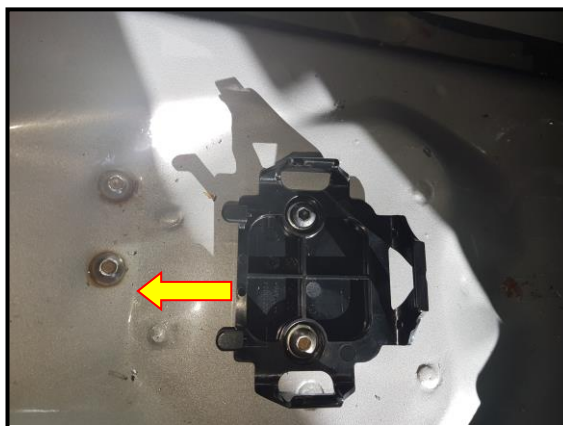
Note: Ensure that there is nothing below the position where you are planning to drill the holes.

Position two flat washers between the bracket and vehicle body to make allowance for a cable tie to be fed between the bracket and the vehicle's body. Secure the bracket onto the vehicle's body by using two 5mm x 15mm Allen Head bolts & nuts.

Note: Ensure that the surface is completely where the bracket is bolted onto the vehicle's body and that the bracket is pointing towards the front of the vehicle.

CAUTION

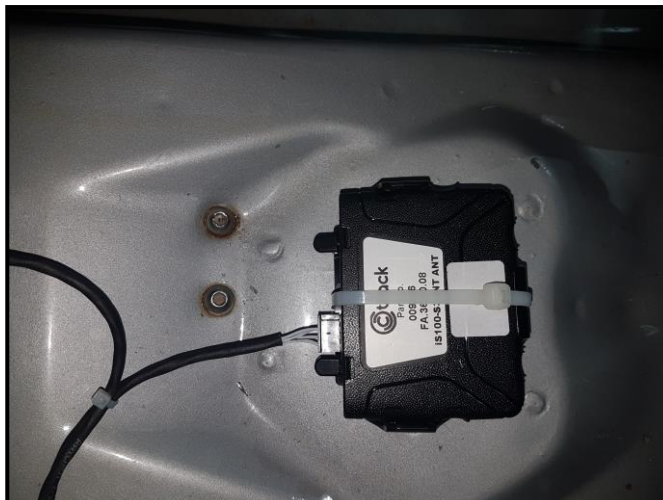
In cases where the surfaces where brackets are mounted get extremely HOT add more washers in order to raise the unit's bracket further from the vehicle's body.



Ctrack Bracket Position

4. Securing the Ctrack Unit

Push a *300mm* cable tie between the vehicle's body and the mounting bracket, clip the unit into the bracket and secure with the cable tie.



Securing the Ctrack Unit

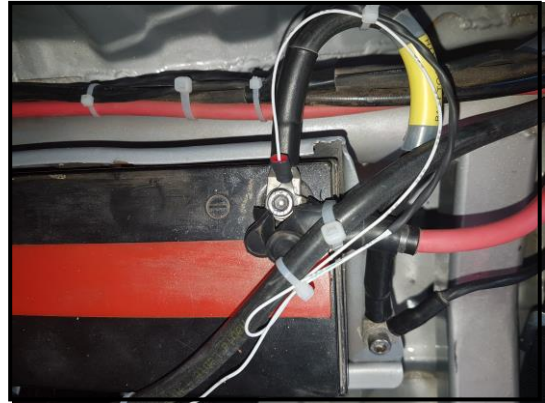
5. Connecting the Harness

Route the harness to the vehicle's battery by following the existing harness in the vehicle and secure by means of cable ties. Make every attempt to steer clear of any communication wire to avoid interference from the tracking unit.



Routing the Harness

The harness must be connected directly to the vehicle's battery terminals. Connect the **Red wire** to the positive battery terminal and the **White wire** to the negative terminal.



Permanent Power & Earth Connections

6. Mounting The Panic Button

The Panic Button must also be mounted between the two front seats on the centre hump by means of the double sided tape provided. Ensure that the surface is clean and that it is mounted on a flat surface.

CAUTION

The Panic Button may only be used in case of a Medical Emergency



Mounting the Panic Button

-----o0o-----